

BROCADE ICX 6650 SWITCH

DATA CENTER

HIGHLIGHTS

- Provides a 10/40 Gigabit Ethernet (GbE) Top-of-Rack (ToR) switch purpose-built for high-performance data center and compute environments
- Delivers industry-leading 10 GbE density in a compact 1U design, saving valuable rack space
- Offers flexible Ports on Demand (PoD) licensing for seamless scalability
- Provides a low-latency, cut-through, non-blocking architecture—ideal for HPC, high-frequency trading, iSCSI storage, and real-time application environments
- Delivers superior value by incorporating enterprise-grade advanced features such as VRRPe, BGP, robust IPv6 support, and Multi-Chassis Trunking (MCT) at no cost
- Provides highly efficient power and cooling with front-to-back or back-to-front airflow and automatic fan-speed adjustment

The Brocade One® strategy helps simplify networking infrastructures through innovative technologies and solutions. The Brocade ICX 6650 Switch supports this strategy by enabling high-performance, low-latency networks with flexible 1/10 GbE and 40 GbE connectivity for investment protection.

A Powerful Top-of-Rack Switch for Data Center and High-Performance Computing

Today's data centers are expanding as demand for data and storage continues to grow exponentially. Moreover, requirements such as application convergence, non-stop operation, scalability, high availability, and power efficiency are placing even greater demands on the network infrastructure. To meet this challenge, today's data center network solutions must provide a broad set of capabilities—including higher levels of performance, reliability, security, and Quality of Service (QoS)—as well as low Total Cost of Ownership (TCO).

Part of the Brocade® ICX® family of Ethernet switches for campus LAN and classic Ethernet data center environments, the Brocade ICX 6650 Switch is a compact, high-performance, high-availability, and high-density 10/40 Gigabit Ethernet (GbE) solution that meets the needs of business-sensitive deployments and High-Performance

Computing (HPC) environments. With industry-leading price/performance and a low-latency, cut-through, non-blocking architecture, the Brocade ICX 6650 provides a cost-effective, robust solution for the most demanding deployments, including high-frequency trading and iSCSI storage.

LEADING-EDGE FLEXIBILITY AND RELIABILITY

The Brocade ICX 6650 provides a highly flexible data center solution that offers the highest levels of reliability. It features 1/10 GbE for server connectivity and 10/40 GbE for uplink connectivity, along with Ports on Demand (PoD) licensing that allows organizations to buy only what they need now and expand later. In addition, the Brocade ICX 6650 ships with redundant, hot-swappable power supplies and fans, reversible airflow, and advanced software.



BROCADE

Flexible Data Center Deployment and Future-Proofing

The Brocade ICX 6650 is a high-density 10 GbE solution for direct server or compute-node connectivity in data center and HPC cluster environments. Each of the 56 front Small Form-Factor Pluggable (SFP+) ports can function as dual-speed 1/10 GbE ports.

The Brocade ICX 6650 also provides six Quad Small Form-Factor Pluggable (QSFP+) ports in the back, including two 4×10 GbE breakout ports and four high-speed 40 GbE ports for uplink network connectivity, making it a flexible solution for environments of any size.

By enabling 1/10 GbE and 40 GbE ports in a 1U space, the Brocade ICX 6650 gives organizations the high density they need to design highly flexible networks while conserving valuable rack space. In addition, they can utilize multiple combinations of short-range and long-range transceivers for a variety of connectivity options.

Increased Reliability through Redundancy and Intelligence

The Brocade ICX 6650 includes dual-internal redundant power supplies. These power supplies are hot-swappable and load-sharing with auto-sensing and auto-switching capabilities, which are critical for power redundancy and deployment flexibility (see Figure 1).

The hot-swappable power supplies and fan assembly allow organizations to replace components without service disruption. In addition, several high-availability and fault-detection features help in failover of critical data flows, enhancing overall system availability and reliability. Organizations can use Brocade Network Advisor and

sFlow-based network monitoring and trending to proactively monitor risk areas and optimize network resources.

Brocade Multi-Chassis Trunking (MCT) supports dual homing of servers in a rack to two Brocade ICX 6650 switches in an MCT peer group, eliminating the risk of a single point of failure. In conjunction with MCT, VRRP-E (the Brocade extension to VRRP for MCT) provides redundancy and sub-second failover for both Layer 2 and Layer 3. For metro or campus deployments in a ring topology, the Brocade Metro Ring Protocol (MRP-I and MRP-II) prevents Layer 2 loops and enables faster re-convergence than Spanning Tree Protocol (STP) with sub-second failover.

GREENER DATA CENTERS WITH LOWER TCO

As application data and storage requirements continue to rise exponentially, demand for higher port density and bandwidth grows, along with the number of network devices and power consumption. Organizations seeking to reduce TCO need solutions that can provide higher scalability and density per rack unit, thereby reducing power consumption and heat dissipation.

The Brocade ICX 6650 addresses those needs with a state-of-the-art ASIC, reversible airflow, automatic fan-speed control, and power-efficient optics to ensure the most efficient use of power and cooling. For low-cost, low-latency, and low-energy-consuming (0.1 watts) cabling within and between the racks, the Brocade ICX 6650 supports SFP+ Direct Attach Copper (Twinax) cables at up to 5 meters. For switch-to-switch connectivity, the Brocade ICX 6650 supports low-power-consuming

SFP+ and 40GBASE-SR4 QSFP+ optical transceivers at up to 100 meters. In high-port-density deployments, these features save significant operating costs.

SUPERIOR ROI AND INVESTMENT PROTECTION

The Brocade ICX 6650 combines strategic performance, availability, and scalability advantages with investment protection for existing LAN environments. It utilizes the same Brocade FastIron® operating system used by other Brocade Ethernet/IP products. This helps ensure full forward and backward compatibility among the product family while simplifying software maintenance and field upgrades.

Moreover, the use of the same industry-standard Command Line Interface (CLI) eliminates the need for staff retraining. As a result, the Brocade ICX 6650 enables organizations to better leverage their current training, tools, devices, and processes.

Brocade enables organizations to further maximize their investments by not requiring additional licensing fees for advanced Layer 3 features, including IPv6 routing.

SIMPLIFIED, STANDARDS-BASED MANAGEMENT

Deploying more switches in a data center infrastructure can increase overall network performance, but it also can prevent organizations from gaining a complete view of network capacity, bandwidth consumption, utilization, and overall health.

To overcome this challenge, the Brocade ICX 6650 utilizes sFlow, a unique solution that helps simplify network management and



Figure 1.

The Brocade ICX 6650 features dual hot-swappable power supplies and fans.

monitoring. By providing real-time visibility into the network, sFlow helps organizations effectively manage transactions flowing throughout the network. This open standards-based approach integrates with a wide range of management, monitoring, and trending utilities. For example, organizations can use Brocade Network Advisor to manage all Brocade data center Ethernet/IP switches and routers, including Brocade VDX® switches, Brocade Turbolron® 24X Switches, Brocade ICX switches, Brocade FCX Series switches, Brocade ServerIron® ADX® Series application delivery switches, and Brocade MLXe Core Routers.

The Brocade ICX 6650 also supports the IEEE 802.1AB LLDP standard, enabling organizations to build open, converged, and advanced multivendor networks. LLDP greatly simplifies and enhances network management, asset management, and network troubleshooting.

With the resulting insight, organizations can quickly and accurately review overall data center operations, identify hot spots, and quickly diagnose and troubleshoot issues before they develop into widespread problems. The Brocade ICX 6650 also provides accurate SNMP/RMON statistics to Brocade Network Advisor, reducing the administrative burden normally associated with proactive network management, design, and capacity planning.

PURPOSE-BUILT FEATURE SET

The Brocade ICX 6650 combines a wide range of unique features to help organizations overcome the most challenging business requirements.

Industry-Leading Advanced Layer 2 and Layer 3 Features

To provide self-healing topologies in Layer 2 configurations, the Brocade ICX 6650 supports industry-standard Ethernet protocols, including multiple varieties of STP and link aggregation as well as optic-, link-, and switch-level fault detection and correction features. The advanced Layer 2 and Layer 3 feature set is leveraged from FastIron switches that have been field-proven in enterprise and data center networks for more than a decade. With rich Layer 3 features enabled, organizations can utilize the Brocade ICX 6650 in several environments.

Data Protection through Robust Security

Security is a critical requirement in today's data centers and branch offices, and the Brocade ICX 6650 provides robust security through a wide range of advanced features. Organizations can use both regular and extended Access Control Lists (ACLs) to control access to and through data center networks.

Organizations can use control policies that permit or deny traffic based on a wide variety of identification characteristics—such as source/destination MAC addresses, source/destination IP addresses, TCP/UDP ports/sockets, and well-known port numbers—further protecting and restricting network access. In addition, for maximum security the Brocade ICX 6650 also leverages 802.11x security, MAC authentication, port MAC security, and MAC filter enhancements.

The Brocade ICX 6650 implements hardware-based ACL, so security does not adversely affect switching performance. In addition, the Brocade ICX 6650 provides hardware-based protection against

Distributed Denial of Service (DDoS) attacks (ICMP flood and TCP SYN) as well as hardware-based private VLAN attacks—with no impact on CPU utilization. Also, BPDU Guard and Root Guard prevent rogue hijacking of the spanning tree root and maintain a contention-free—and loop-free—environment, especially during dynamic network deployments.

Advanced QoS to Improve Data Traffic Integrity

The Brocade ICX 6650 offers superior QoS features designed to ensure high-reliability services throughout the data center. It can identify, mark, classify, reclassify, and manage traffic based on specific criteria. This enables organizations to classify bandwidth-critical application traffic, discriminating among various traffic flows and enforcing bandwidth policies.

After the traffic is classified, organizations have complete control over the method the system uses to service the queues: Weighted Round Robin (WRR), Strict Priority (SP), or a mix of both. For granular control to regulate bandwidth utilization, the Brocade ICX 6650 can also perform ingress rate limiting and egress rate shaping.

Multicast-Based Applications

The use of video, financial, and other one-to-many applications requires support for scalable multicast services. The Brocade ICX 6650 supports IGMPv1/2/3, PIM-SM/SSM/DM, MSDP, Anycast RP, and PIM Snooping for optimized multicast forwarding. In addition, the Brocade ICX 6650 provides storm-control features to contain and intelligently switch rather than broadcast multicast traffic.



Figure 2.

The Brocade ICX 6650 provides data center ToR access while the Brocade MLXe routers provide an aggregation solution.

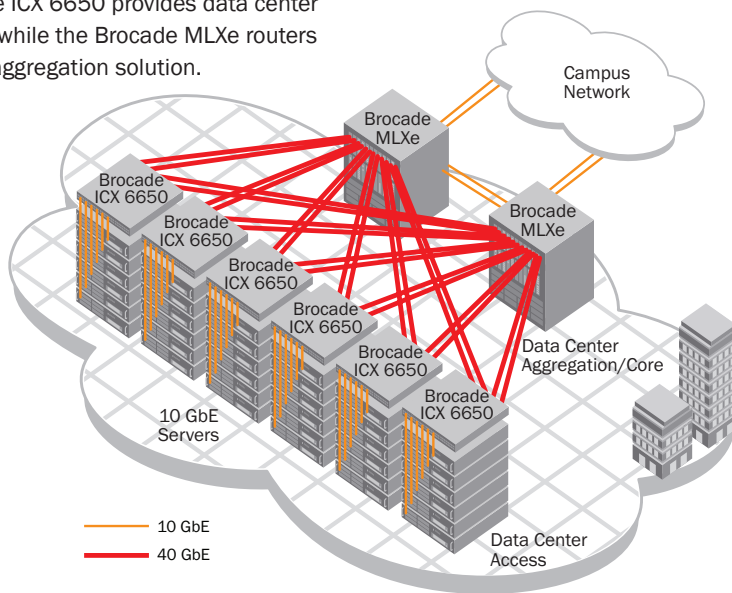


Figure 3.

The Brocade ICX 6650 provides data center aggregation with Brocade ICX 6610, 6430, and 6450 Switches providing ToR access.

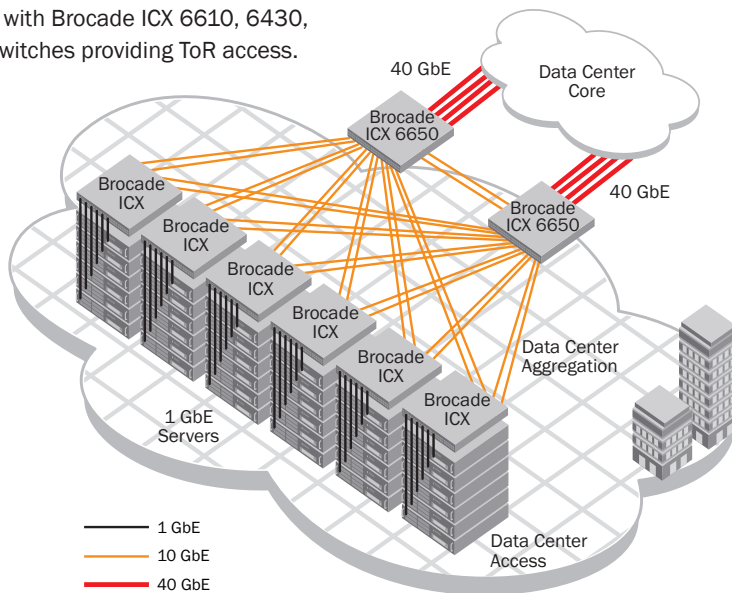
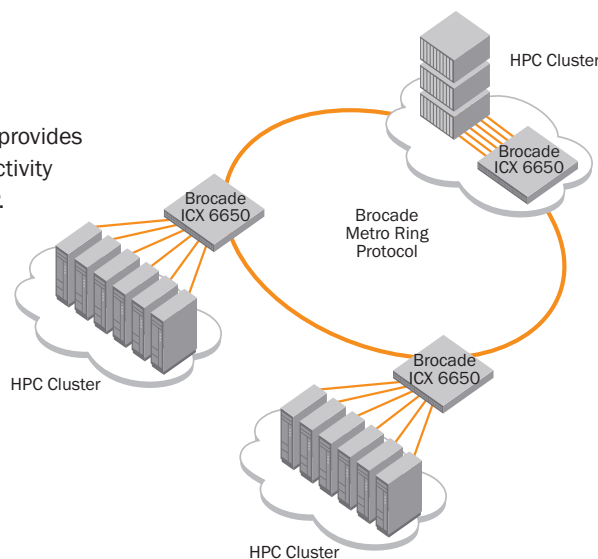


Figure 4.

The Brocade ICX 6650 provides HPC cluster interconnectivity based on Brocade MRP.



KEY SOLUTION AREAS

The Brocade ICX 6650 provides a high-performance, cost-effective solution for many types of data center and midmarket environments, including Top-of-Rack (ToR) server connectivity, 10 GbE aggregation, iSCSI storage, and HPC environments.

Data Center ToR Server Connectivity

The Brocade ICX 6650 is designed to fit in server racks, and it consumes only one rack unit. To simplify cabling, the 10 GbE Network Interface Cards (NICs) in the servers connect to the Brocade ICX 6650 10 GbE ports by using fiber and SFP+ optical transceivers or SFP+ Direct Attach Copper cable (see Figure 2).

If any servers in the rack have only 1 GbE-capable NICs, organizations can connect them to the same Brocade ICX 6650 switch by using a 10 GbE port as a 1 GbE port through an SFP. The Brocade ICX 6650 ToR switch can connect to the data center middle-of-row/end-of-row aggregation chassis with either 10 GbE or 40 GbE, usually through link aggregation.

Cost-Effective 10 GbE Aggregation

In data center environments where most servers are 1 GbE-capable, the Brocade ICX 6650 provides a compact and cost-effective 10 GbE aggregation switch. It connects to the data center core through 10 GbE or 40 GbE ports, and it uses 10 GbE links to connect to Brocade ICX ToR switches at the edge of the network (see Figure 3).

High-Performance Cluster Computing Connectivity

HPC cluster connectivity has entered the mainstream marketplace with classic Ethernet switching as the technology of choice. Low-latency, high-density Ethernet switching is required for successful deployment, making the Brocade ICX 6650 ideal for this type of environment.

The Brocade ICX 6650 is designed to meet the high-performance, density, and reliability requirements of the most demanding HPC environments. In environments where high-speed cluster interconnectivity is required over distance, organizations can use Brocade Metro Ring Protocol (MRP)-supporting devices (such as the Brocade FastIron, Brocade NetIron®, and Brocade BigIron® offerings) in conjunction with the Brocade ICX 6650 to provide dual-ring, fault-tolerant connectivity (see Figure 4).

Collapsed Aggregation and Core Layer Deployment for Midmarket Networks

The aggregation and core layer may be collapsed in some environments due to a smaller number of connections from the access/edge layer. In this case, the need for a cost-effective, high-density 10 GbE platform becomes imperative. The Brocade ICX 6650 provides the necessary advanced Layer 2 and Layer 3 features to be deployed in such networks (see Figure 5).

Cost-Effective Co-Located Financial Services

Brokerage firms, trading partners, and financial service providers use co-located data centers as a way to connect and exchange data. The Brocade ICX 6650 acts as a border gateway for these data centers to efficiently and cost-effectively exchange BGP routes between virtual sites using 1/10 GbE connectivity (see Figure 6).

WARRANTY

The Brocade ICX 6650 Switch is covered by the Brocade Standard Limited Warranty. For details, visit www.brocade.com/warranty.

BROCADE GLOBAL SERVICES

Brocade Global Services has the expertise to help organizations build scalable, efficient cloud infrastructures. Leveraging 15 years of expertise in storage, networking, and virtualization, Brocade Global Services delivers world-class professional services, technical support, network monitoring services, and education, enabling organizations to maximize their Brocade investments, accelerate new technology deployments, and optimize the performance of networking infrastructures.

CLOUD-OPTIMIZED NETWORK ACQUISITION

Brocade helps organizations easily address their information technology requirements by offering flexible network acquisition and support alternatives to meet their financial needs. Organizations can select from purchase, lease, and Brocade Network Subscription options to align network acquisition with their unique capital requirements and risk profiles. To learn more, visit www.Brocade.com/CapitalSolutions.

MAXIMIZING INVESTMENTS

To help optimize technology investments, Brocade and its partners offer complete solutions that include professional services, technical support, and education. For more information, contact a Brocade sales partner or visit www.brocade.com.

Figure 5.

The Brocade ICX 6650 provides a collapsed aggregation and core layer for midmarket networks, while the Brocade ICX 6610, 6430, and 6450 Switches provide access to users.

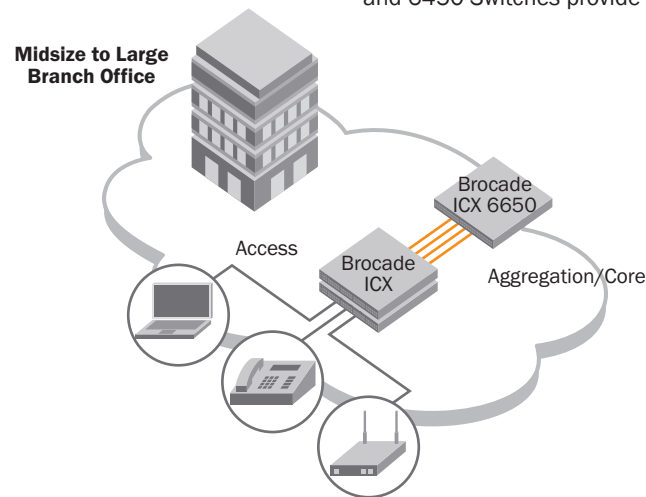
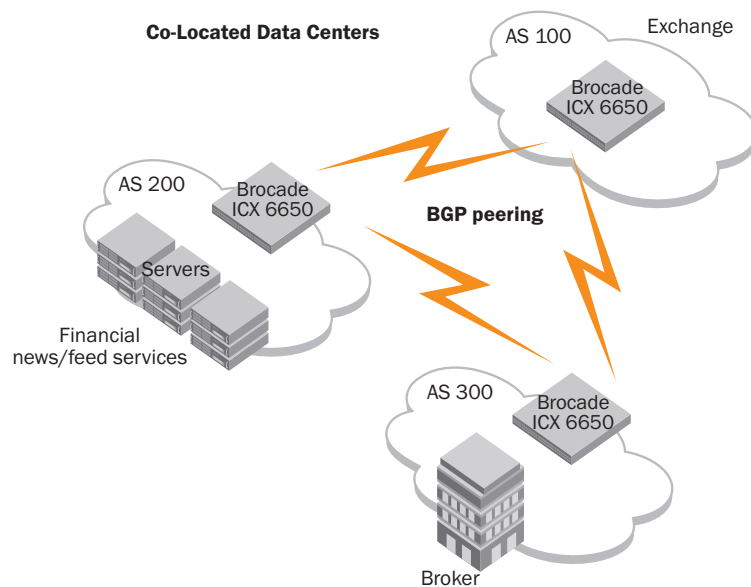


Figure 6.

The Brocade ICX 6650 acts as a border gateway to efficiently and cost-effectively exchange BGP routes between sites using 1/10 GbE connectivity.



BROCADE ICX 6650 SPECIFICATIONS

System Architecture			
Ports	56-port 10GBASE-X SFP+ (dual-speed 1/10 GbE) 2-port 4×10GBASE-X QSFP+ (10 GbE) 4-port 40GBASE-X QSFP+ (40 GbE)	Altitude	Operating: Up to 9842 feet above sea level (3000 meters) Storage: Up to 39,370 feet above sea level (12,000 meters)
Performance	8 MB packet buffer 1600 Gbps line-speed full-duplex throughput 1190 Mpps forwarding capacity 1100 to 1800 nanosecond latency	Airflow	Maximum: 53 CFM Nominal (65% speed): 35 CFM
Scalability	VLANs: 4096 MAC addresses: 64,000 ACLs: 2000 (ingress/egress) QoS queues per port: 8 Link aggregation: 8 links per group, 127 groups per switch STP: 16 RSTP: 254 IPv4 routes: 8000 IPv6 routes: 2000 Hosts: 8000 Max ECMP: 8 IGMP groups: 4000	Heat dissipation	478 BTU/hour
Maximum frame size	10,220 byte Ethernet frame	Power	
Data traffic types	Unicast, multicast, and broadcast IP traffic	Power	Maximum power output: 250 W per power supply Maximum power consumption: 230 W
Media types	1000BASE-TX SFP, RJ45 (Cat5, 6, Cat6a/7) 1000BASE-SX SFP 1000BASE-LX SFP SFP+ Direct Attach Copper cable, 10 GbE (1/3/5 m Twinax) 10GBASE-USR SFP+ (MMF Ultra-Short Reach) 10GBASE-SR SFP+ (MMF Short Reach) 10GBASE-LR SFP+ (SMF 10 km reach) 40GBASE-SR4 QSFP+ (MTP 1×8 or 1×12), MMF 100 m 40GBASE-SR4 QSFP+ (MTP 1×8 or 1×12), MMF 100 m (10GBASE-SR compatible, breakout) QSFP+ to 4 SFP+ Direct Attach Copper breakout cable (1/3/5 m)	Input voltage	100 to 240 VAC nominal
Licensing options	Ports on Demand (PoD) licenses for up to 24 additional SFP+ ports (1/10 GbE) in increments of 8, and up to 6 additional QSFP+ ports (4×10 GbE or 40 GbE) in increments of 2.	Input line frequency	50 to 60 Hz
Management		Regulatory Compliance	
Supported management software	SSHv2, SNMPv1/v2/v3, Telnet; Brocade Network Advisor; RADIUS	Safety	CAN/CSA-C22.2 NO. 60950-1-07; UL 60950-1 2nd Edition; IEC 60950-1 2nd Edition; EN 60950-1:2006 Safety of Information Technology Equipment; EN 60825-1 Safety of Laser Products—Part 1: Equipment Classification, Requirements and User's Guide; EN 60825-2 Safety of Laser Products—Part 2: Safety of Optical Fibre Communication Systems
Management access	One 10/100/1000 Mbps (RJ-45) port and one mini-USB serial console port	Electromagnetic emission certification	CC Class A (Part 15); EN 55022/CISPR-22 Class A; VCCI Class A; ICES-003 Electromagnetic Emission; AS/NZS 55022; EN 61000-3-2 Power Line Harmonics; EN 61000-3-3 Voltage Fluctuation and Flicker; EN 61000-6-3 Emission Standard (supersedes: EN 50081-1)
Diagnostics	POST and embedded online/offline diagnostics	Immunity	EN 61000-6-1 Generic Immunity and Susceptibility (supersedes EN 50082-1); EN 55024 Immunity Characteristics (supersedes EN 61000-4-2 ESD); EN 61000-4-3 Radiated, Radio Frequency, Electromagnetic Field; EN 61000-4-4 Electrical Fast Transient; EN 61000-4-5 Surge; EN 61000-4-6 Conducted Disturbances Induced by Radio-Frequency Fields; EN 61000-4-8 Power Frequency Magnetic Field; EN 61000-4-11 Voltage Dips and Sags
Mechanical		Environmental regulatory compliance	RoHS compliant (6 of 6) WEEE compliant
Enclosure	Reversible airflow; 1U; 16.88 in. EIA-compliant; power from non-port side	RFC Compliance and Features	
Size	Width: 429.0 mm (16.88 in.) Height: 44 mm (1.732 in.) Depth: 406.4 mm (16.00 in.)	Layer 1	IEEE 802.3ad Link Aggregation IEEE 802.3x Flow Control IEEE 802.3 10BASE-T IEEE 802.3u 100BASE-TX IEEE 802.3z 1000BASE-SX/LX IEEE 802.3ab 1000BASE-T 802.3 CSMA/CD Access Method and Physical Layer Specifications 802.3ae 10 Gigabit Ethernet 802.3ba 40 Gigabit Ethernet Jumbo Frame
System weight	8.41 kg (18.5 lb) with two power supplies, two fans, without transceivers	Layer 2	IEEE 802.1D MAC Bridging/STP IEEE 802.1p Mapping to Priority Queue IEEE 802.1Q VLAN Tagging IEEE 802.1w Rapid Spanning Tree Protocol (RSTP) IEEE 802.1s Multiple Spanning Tree Protocol (MSTP) IEEE 802.1x Port Based Network Access Control IEEE 802.1AB LLDP 802.1AX Link Aggregation Private VLAN STP Port Fast STP Root Guard 802.1ad Q-in-Q MCT (Brocade Multi-Chassis Trunking) MRP-I, MRP-II (Brocade Metro Ring Protocol) Topology and VLAN Groups
Environmental			
Temperature	Operating: 0° C to 40° C (32° F to 104° F) Non-operating: -25° C to 70° C (-23° F to 158° F)		
Humidity	Operating: 5% to 95% non-condensing Non-operating: 5% to 80% non-condensing		
Operating noise	46.7 dB		

BROCADE ICX 6650 ORDERING INFORMATION

Part Number	Description
ICX6650-32-E-ADV	Brocade ICX 6650 with 32 10 GbE SFP+ ports enabled. Includes two 250 W AC power supplies and two fan units, exhaust airflow. Advanced software. No optics.
ICX6650-32-I-ADV	Brocade ICX 6650 with 32 10 GbE SFP+ ports enabled. Includes two 250 W AC power supplies and two fan units, intake airflow. Advanced software. No optics.
ICX6650-40-E-ADV	Brocade ICX 6650 with 32 10 GbE SFP+ ports enabled, and PoD license for an additional eight 10 GbE SFP+ ports. Includes two 250 W AC power supplies and two fan units, exhaust airflow. Advanced software. No optics.
ICX6650-40-I-ADV	Brocade ICX 6650 with 32 10 GbE SFP+ ports enabled, and PoD license for an additional eight 10 GbE SFP+ ports. Includes two 250 W AC power supplies and two fan units, intake airflow. Advanced software. No optics.
ICX6650-48-E-ADV	Brocade ICX 6650 with 32 10 GbE SFP+ ports enabled, and PoD license for an additional 16 10 GbE SFP+ ports. Includes two 250 W AC power supplies and two fan units, exhaust airflow. Advanced software. No optics.
ICX6650-48-I-ADV	Brocade ICX 6650 with 32 10 GbE SFP+ ports enabled, and PoD license for an additional 16 10 GbE SFP+ ports. Includes two 250 W AC power supplies and two fan units, intake airflow. Advanced software. No optics.
ICX6650-56-E-ADV	Brocade ICX 6650 with 32 10 GbE SFP+ ports enabled, and PoD license for an additional 24 10 GbE SFP+ ports. Includes two 250 W AC power supplies and two fan units, exhaust airflow. Advanced software. No optics.
ICX6650-56-I-ADV	Brocade ICX 6650 with 32 10 GbE SFP+ ports enabled, and PoD license for an additional 24 10 GbE SFP+ ports. Includes two 250 W AC power supplies and two fan units, intake airflow. Advanced software. No optics.
ICX6650-80-E-ADV	Brocade ICX 6650 with 32 10 GbE SFP+ ports enabled, PoD licenses for an additional 24 10 GbE SFP+ and six (two 4×10 GbE, and four 40 GbE) QSFP+ ports. Includes two 250 W AC power supplies and two fan units, exhaust airflow. Advanced software. No optics.
ICX6650-80-I-ADV	Brocade ICX 6650 with 32 10 GbE SFP+ ports enabled, PoD licenses for an additional 24 10 GbE SFP+ and six (two 4×10 GbE, and four 40 GbE) QSFP+ ports. Includes two 250 W AC power supplies and two fan units, intake airflow. Advanced software. No optics.
ICX6650-8P10G-LIC-POD	Ports-on-Demand license for Brocade ICX 6650, for 8×10 GbE SFP+ ports
ICX6650-2P40G-LIC-POD	Ports-on-Demand license for Brocade ICX 6650, for two QSFP+ (40 GbE or 4×10 GbE) ports
RPS15-E	250 W AC power supply; port-side intake airflow
RPS15-I	250 W AC power supply; port-side exhaust airflow
XICX6650-FAN-E	Brocade ICX 6650 fan unit, exhaust airflow
XICX6650-FAN-I	Brocade ICX 6650 fan unit, intake airflow
10G-SFPP-TWX-0101	SFP+ Direct Attach Copper cable, 1 m
10G-SFPP-TWX-0301	SFP+ Direct Attach Copper cable, 3 m
10G-SFPP-TWX-0501	SFP+ Direct Attach Copper cable, 5 m
10G-SFPP-USR	10GBASE-USR SFP+ optical transceiver, 100 m over MMF LC, 1-pack
10G-SFPP-SR	10GBASE-SR SFP+ optical transceiver, SMF LC
10G-SFPP-LR	10GBASE-LR SFP+ optical transceiver, SMF LC
E1MG-TX	1000BASE-T SFP copper transceiver, RJ-45 connector
E1MG-SX-OM	1000BASE-SX SFP optical transceiver, MMF LC, optical monitoring capable
E1MG-LX-OM	1000BASE-LX SFP optical transceiver, MMF LC, optical monitoring capable
40G-QSFP-SR4	40GBase-SR4 QSFP+ optic (MTP 1×8 or 1×12), 100 m over MMF, 1-pack
40G-QSFP-SR4-INT	40GBase-SR4 QSFP+ optic (MTP 1×8 or 1×12), 100 m over MMF (10GBASE-SR compatible, 4×10 GbE breakout), 1-pack
40G-QSFP-4SFP-C-0101	QSFP+ to 4 SFP+ (4×10 GbE) Direct Attach Copper breakout cable, 1 m, 1-pack
40G-QSFP-4SFP-C-0301	QSFP+ to 4 SFP+ (4×10 GbE) Direct Attach Copper breakout cable, 3 m, 1-pack
40G-QSFP-4SFP-C-0501	QSFP+ to 4 SFP+ (4×10 GbE) Direct Attach Copper breakout cable, 5 m, 1-pack

Corporate Headquarters

San Jose, CA USA
T: +1-408-333-8000
info@brocade.com

European Headquarters

Geneva, Switzerland
T: +41-22-799-56-40
emea-info@brocade.com

Asia Pacific Headquarters

Singapore
T: +65-6538-4700
apac-info@brocade.com

© 2012 Brocade Communications Systems, Inc. All Rights Reserved. 09/12 GA-DS-1694-00

ADX, Brocade, Brocade Assurance, Brocade One, the B-wing symbol, DCX, Fabric OS, ICX, MLX, MyBrocade, SAN Health, VCS, and VDX are registered trademarks, and AnyIO, HyperEdge, NET Health, OpenScript, and The Effortless Network are trademarks of Brocade Communications Systems, Inc., in the United States and/or in other countries. Other brands, products, or service names mentioned may be trademarks of their respective owners.

Notice: This document is for informational purposes only and does not set forth any warranty, expressed or implied, concerning any equipment, equipment feature, or service offered or to be offered by Brocade. Brocade reserves the right to make changes to this document at any time, without notice, and assumes no responsibility for its use. This informational document describes features that may not be currently available. Contact a Brocade sales office for information on feature and product availability. Export of technical data contained in this document may require an export license from the United States government.

