

THE POSSIBILITIES ARE INFINITE

FUJITSU

Global Server  
GS8500FX



Leading-edge Internet technology in a new compact "desk-side type"!

## Introducing the compact GlobalServer GS8500FX

The GlobalServer GS8500FX Model Group offers you a selection of central servers ideal for the Internet Age. The Model Group gives you the flexibility you need to respond immediately to the growing demand for processing capacity as the number of users and data volume expand, and delivers the kind of reliability that makes possible continuous round-the-clock operation.

The GS8500FX Model Group was designed and developed with the Earth's environment in mind. It saves space and energy, while offering the high-performance and dependability you require. The CPU features the latest CMOS technology, and at a space-saving 80 centimeters high, it is the perfect choice for any office.

The GlobalServer offers a multi-server configuration, enabling it to be linked up with UNIX and IA servers. Configured this way, it can function as the center for the system, making possible concentrated data processing.



### Features of the GS8500FX Model Group

#### "Desk-side type." A space-saving 80 centimeters high.

The GS8500FX is a "desk-side type" server, featuring the latest CMOS technology and high-density mounting technology. All the channels and internal components are housed inside the space-saving compact frame. It requires no anti-earthquake set-up during installation. The GS8500FX can also be fitted into a special 19-inch rack (height: 180 centimeters).

#### Integrated system storage unit

The internal array disk system is arranged in a RAID format, so in the event of DE failure, the hot-swappable spare will automatically switch the DE and continue operation.

You can also mount a 36-track internal magnetic tape system. The cartridge insertion mechanism allows continuous automatic operation of five or ten reels of 1/2 cartridge magnetic tape.

#### Integrated LAN Controller

The system supports an Ethernet (100 Mbps, 10 Mbps) LAN system that meets international and industry standards. It can be connected to and operated with open systems using the TCP/IP protocol.

#### Integrated Communications Control Processor (INP2)

The INP2 lets you connect to up to 32 different lines.

#### Varied Channel Configuration

The multi-server configuration system operating together with UNIX/IA servers allows the use of trunk databases in an open-systems environment.

The system also supports the FCLINK channel with a data transmission speed of 100 MB/second. By pairing it with the OCLINK station, you can run up to eight peripheral devices through one single channel connected to the OCLINK channel.

FCLINK: Fibre Channel LINK

#### Crypto Coprocessor

Mounting a special crypto coprocessor makes possible high-speed processing while maintaining tamper-proof data secrecy during network computing.



Standard Model (desk-side type)



Disk Mounted Model (desk-side type)



Special 19-inch rack

## GS8500FX Technology for Superior Function and Reliability

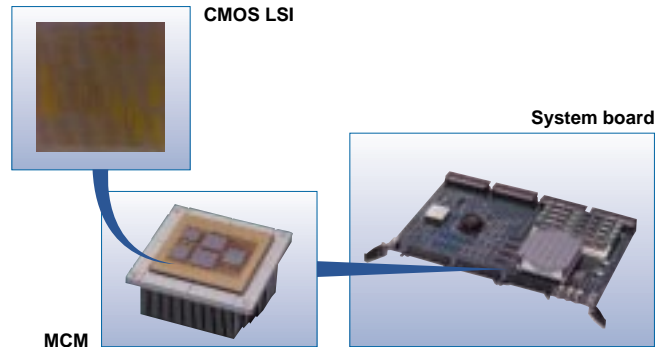
### Leading-Edge, High-Reliability CMOS Technology

The CPU uses a single-chip high integration CMOS LSI with a copper wire manufacturing process of 0.18 micrometers. This technology has already been successfully used in the world's fastest CMOS, the GS8900. In addition to incorporating the expertise in Superscalar architecture that Fujitsu has accumulated over the years in developing and producing the M-Series, the GS series combines a new architecture known as Out-of-Order execution to achieve faster CPU speed and better reliability.

### High Density Mounting Technology

The CMOS LSI of the CPU and other key processors, as well as the secondary cache memory, are mounted onto a full copper film MCM measuring approximately 67 millimeters square. Integrating the MCM and a main memory of up to 2 GB onto a single system board shortens the distance between units, and speeds up data transmission

MCM: Multi Chip Module



## GlobalServer's software supports the information systems of new businesses in the Internet Age

### Software for the Internet Age

#### Basic functions of the high-performance, high-reliability GlobalServer

The basic software of GlobalServer includes a basic control program, an on-line transaction control program, a program development environment function.

#### International Standard Relational Database (SymfoWARE Server)

The GlobalServer comes equipped with a relational database (SymfoWARE server) which operates with industry-standard interfaces such as ODBC, OLE, OCX, and JDBC, as well as RDA, the current international standard.

#### Internet Functions

While maintaining the investment and know-how involved in existing systems, the GlobalServer includes both an HTTP communications function for reliable and expandable trunk operational systems via the Internet, and a TCP/IP protocol communications function.

#### Linkage to Windows

Includes functions that enable new trunk operational configurations combining the GlobalServer with standard Windows distribution software (Excel, Access, ODBC, etc.).

### Software for a Variety of Solutions

#### Excel Batch

Provides parallel batch processing for high-speed, high-capacity data processing.

#### Continuous Operation

Delivers the functions you need for round-the-clock on-line operation, including concurrent operation of on-line tasks and batch tasks as well as on-line high-speed, high-volume data copying.

#### Backup Center (MSP)

Includes a function for constructing a remote backup center to restore system functions in the event of earthquake or other disaster.

#### Software for Internet Server

Provides the basis for executing applications common to multiple servers operating in the Internet industry standards environment (CORBA).

#### Multi-Server System

Through a multi-server configuration, the GlobalServer provides high-speed data transmission, data exchange, data sharing, and overall task observation and control functions to create trunk systems.

#### Storage Management

Offers automatic storage management necessary for energy saving in system operations, as well as integrated storage management functions and backup recovery controls.

# GS8500FX Specifications and Installation Dimensions

## Specifications

	Standard Model	Disk Mounted Model
	10K, 10L, 10M, 10N, 10P, 10Q, 10R, 10	10K, 10L, 10M, 10N
Number of CPUs	1	
Main Memory	128MB — 2GB	128MB — 1.5GB
Channel Types	BMC, OCLINK, FCLINK	BMC, OCLINK, FCLINK, HDFA
Channel Mounting Quantity*	0 – 56 units	0 – 52 units
Open Network Adapters*	0 – 2 units	
Crypto Coprocessors*	0 – 2 units	—
System Storage Unit	0 – 256MB	
Integrated Communications Control Processor*	Max. 32 lines	
Integrated LAN Controller*	Standard: 10M ethernet, Option: 100M ethernet	
Integrated Floppy Disk Drive	Standard: 3.5 inch unit	
Integrated Array Disk System	—	0 — 240GB
Integrated Magnetic Tape System	—	0 – 1 units (for 36 tracks)
Supporting Operating Systems (OS)	OS IV/MSP, OS IV/XSP	OS IV/XSP

\* The maximum number is limited by the type of set-up. Note: The crypto coprocessor is supported with the OS IV/MSP operating system.

## Dimensions

	Measurements (mm)			Weight (kg)	Heat Emission (KJ/hr)	Required Electric Power (KVA)
	Width	Depth	Height			
Processing Device Frame	590	868	800	250	3,630	1.1
Expanded Channel Frame	430*	850	800	200	1,950	0.6
Integrated Array Disk System Frame	350*	850	800	150	2,030	0.6
Integrated Magnetic Tape System Frame	350*	850	800	100	680	0.2
Basic Rack	765	918	1,800	Differs according to the internally mounted devices.		
Expanded Rack	725*	918	1,800			
Magnetic Tape System Rack	280*	900	1,800	200	680	0.2

\* : Side plates not included.

# Full Line of Peripherals for the GlobalServer

## Array Disk System

Model Name	Capacity	Maximum data transfer speed
F6494E2	5.04 — 357.21 GB	Electrical channel : 4.5 MB/sec Optical channel : 9.0 MB/sec OCLINK channel : 17.0 MB/sec

## System Printer

Model Name	Name	Printing speed
PS4160W	Duplex page printer	Max. 320 PPM/8,250x2 LPM (6 LPI)
PS4400A	Simplex page printer	Max. 400 PPM/20,400 LPM (6 LPI)
PS4160A		Max. 160 PPM/8,250 LPM (6 LPI)

## Magnetic Tape System (cartridge)

Model Name	Number of tracks	Data transfer speed	Recording density
F6484	128 tracks	13.5 MB/sec	86,360 BPI
F6476K	36 tracks	3.0 MB/sec	75,742 BPI

## Magnetic Tape Library System

Model Name	Number of tracks	Data transfer speed	Recording density	Cartridge capacity
F6456K	36 tracks	3.0 MB/sec	75,742 BPI	315 cartridges

Specifications are subject to change without notice.

All brand names and product names are trademarks and registered trademarks of their respective holders.

First Edition, June 2000

## FUJITSU LIMITED

For further information please contact:

### Computer Systems Group

1-1, Kamikodanaka 4-chome, Nakahara-ku, Kawasaki 211-8588, Japan

Phone: 81-44-754-3210 Fax: 81-44-754-3321

<http://www.fujitsu.co.jp/hypertext/InfoPro/gspl/>

©2000 Fujitsu Limited.  
All rights reserved.  
Printed in Japan.

**BP0056-1M**