

## EMC CLARiiON FC5700 System

High I/O-intensive performance for your business applications

- 1** Full Fibre Channel architecture delivers performance and scalability to your business applications
- 2** Ideal for large OLTP, messaging, PC-LAN server, file server, software development, decision support, and data warehousing applications
- 3** Centralized storage management reduces overall system management costs
- 4** Fully redundant architecture provides high data integrity and availability for your business applications, reducing unplanned downtime and improving application deployment
- 5** Modular components protect your investment and address future storage needs by providing scalable and flexible upgrade paths
- 6** Around-the-clock coverage for your EMC CLARiiON systems, including on-site service, parts, and labor, 24-hours-a-day, seven-days-a-week



### **EMC—more than just a storage provider.**

When your business is ready for new or additional storage products, make sure you look at the big picture before you make this important investment. Are you realizing all the benefits that the right storage solution can deliver? The right storage solution improves the way you use your information daily. It opens new avenues of information gathering and analyzing. It gives you the tools to generate new ideas for reaching your customers and delivering the right products at the

right time and in the right place. If you have not realized all of these possibilities, then it's time to talk to EMC.

EMC does more than spout storage specifications. We take the time to discover exactly what your business is about and how we can help you use our products to implement a way of doing business that you never thought possible. We can meet your need for distributed storage systems with our EMC CLARiiON<sup>®</sup> full Fibre Channel arrays, including the EMC CLARiiON FC5700.

# High performance, capacity, and flexibility to meet all your storage needs.

## **Fibre Channel—the latest storage technology.**

If your business requires high performance for I/O-intensive applications, the EMC CLARiiON FC5700 is an ideal fit for online transaction processing (OLTP), messaging, PC-LAN servers, file servers, software development, decision support, and many data warehousing applications. The EMC CLARiiON FC5700 delivers the advantage of superior hardware, software, integration, and services, in addition to a high level of investment protection. EMC CLARiiON full Fibre Channel products bring new levels of performance, modularity, connectivity, flexibility, and manageability to your storage environment.

The EMC CLARiiON FC5700 is the next generation of “end-to-end” fibre storage. Other industry storage arrays may simply offer a Fibre Channel host interface, while still relying on SCSI-based storage inside the disk array. With EMC CLARiiON arrays, you receive the power and benefit of full Fibre Channel technology, from host connection to individual internal disk drives of the array.

To keep your business fully protected against planned or unplanned disruption to your valuable information, the FC5700 high-availability disk array is completely redundant with no single point of failure. The FC5700 array’s redundant architecture includes everything you need for

continuous data access and availability. Industry analysts point to Fibre Channel as the optimal storage technology—for now and in the future. EMC CLARiiON Fibre Channel technology is unsurpassed. Because of its exceptional data throughput, storage expandability, and connectivity features, EMC CLARiiON Fibre Channel is a proven technology for meeting today’s business requirements.

The FC5700 disk arrays fully exploit Fibre Channel technology, delivering both high data throughput and high I/O performance. The FC5700 boasts performance of 120MB per second throughput and 22,000 I/Os per second. FC5700 disk arrays support up to 100 disks (9, 18, or 36GB), for a total of 3.6 terabytes of storage. EMC CLARiiON arrays provide the highest flexibility for heterogeneous system environments by supporting UNIX (Sun Solaris, HP HP-UX, IBM AIX), Novell NetWare, and Microsoft Windows NT platforms.

## **Modular architecture.**

Today’s sophisticated software applications demand storage performance tailored to an application. The EMC CLARiiON building-block architecture allows you to scale your systems easily and cost effectively, to storage requirements that meet your needs today and in the future. Through the EMC Enterprise Storage Network,<sup>TM</sup> CLARiiON can be part of your overall EMC E-Infostructure<sup>TM</sup>.

## **Fibre Channel enhances connectivity.**

The EMC FC5700 array’s full Fibre Channel technology greatly simplifies cabling issues. Built-in Fibre Channel hubs allow connectivity to dual-server clusters without using external hubs. The arrays can be connected to a Fibre Channel switch, an external hub, or an MIA (Media Interface Adapter) for optical connections, thereby reducing implementation costs.

## **Cluster expansion for application redundancy.**

EMC CLARiiON Fibre Channel RAID arrays in a clustered system environment enhance performance and data availability. Servers can be removed, replaced, or added, and additional FC5700 subsystems can be added, all with non-disruptive scaling.

## **High availability and data integrity.**

Software reliability and a robust hardware design are the keys to EMC CLARiiON high-availability storage systems. The FC5700’s software, coupled with a redundant design, provides an unparalleled storage system architecture for data integrity.

And, EMC CLARiiON disk arrays’ patented technology provides two additional levels of data integrity beyond other RAID products: end-to-end checking of the data inside the disk array and parity coherence. End-to-end checksum provides a mechanism against data corruption, even after adverse, unexpected events occur. Data parity coherence protects against the possible inaccuracies that can be created during

## HIGHLIGHTS

### **High Performance.**

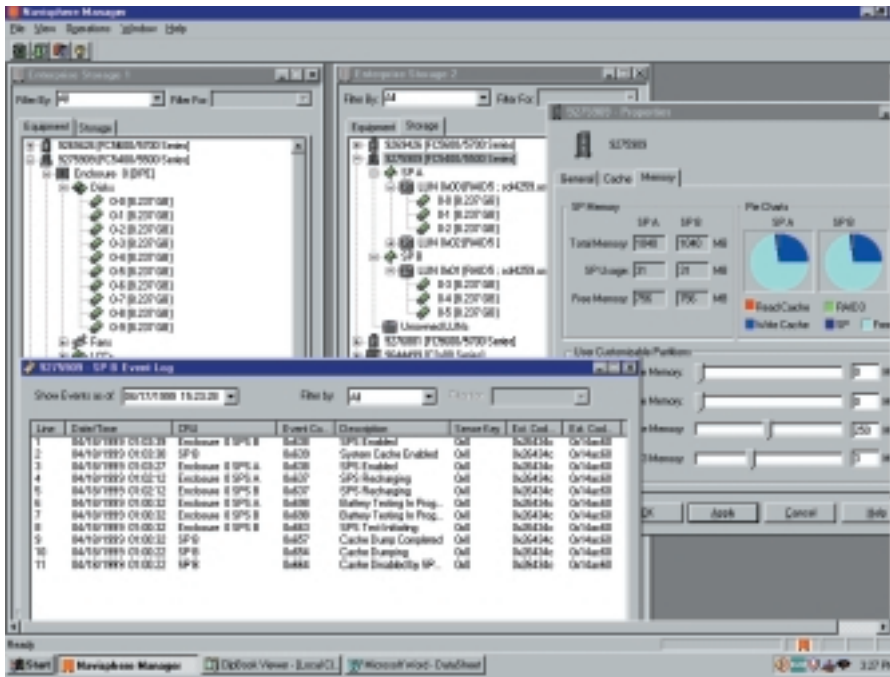
The FC5700 boasts performance of 22,000 I/Os per second, resulting in faster response times and improved application performance.

### **Configuration flexibility.**

The FC5700 is ideal for distributed and departmentalized office environments. Start with as few as ten drives and grow dynamically to 100 drives to meet application requirements for capacity and throughput.

### **Full Fibre Channel RAID Storage.**

Fibre Channel is the proven technology for meeting business requirements today and tomorrow. This technology is yours with the EMC CLARiiON FC5700.



power outages and disk failures. EMC CLARiiON industry-proven RAID storage systems deliver data reliability under even the most adverse conditions.

**RAID flexibility.**

The FC5700 provides RAID levels 0, 1, 1/0, 3, and 5, allowing arrays to be easily configured into high-performance storage pools for specific applications, balancing performance and cost. RAID protection is through the array, relieving the host from this task and saving precious host CPU cycles.

**Simplified IT infrastructure management with Navisphere.**

Navisphere® storage management software extends the capabilities of EMC CLARiiON

arrays by delivering comprehensive, business-wide storage management. This suite of tools, packaged as components, enables businesses to effectively configure, monitor, and tune EMC CLARiiON disk arrays. Navisphere simplifies the management of all EMC CLARiiON storage devices, increasing the productivity of the system administration staff while reducing storage management costs.

Protection of information and control of data assets are important components for array management. Navisphere provides a balanced set of capabilities that meets the ease-of-management and security requirements of most applications. Navisphere enterprise applications, such

**High-availability features.**

Redundant component architecture, high data integrity and availability, and Application Transparent Failover increase application availability thereby enhancing business operations.

**Navisphere storage management and analysis tools.**

Centralized storage management tools reduce cost of ownership by lowering storage management costs. Analysis tools enable administrators to enhance array performance.

as Manager/Supervisor, ATF (Application Transparent Failover), Event Monitor, Analyzer, Integrator, and CLI, allow administrators to monitor, manage, and optimize storage devices installed in a network. Navisphere is available for all EMC CLARiiON arrays.

**Remote diagnostics protect your operations.**

CLARAlert® remote support, standard with your EMC CLARiiON FC5700 arrays, is a key tool we use to help us seek out and eliminate problems that can affect you and your business. CLARAlert is a proactive service for anticipating potential hardware or software problems before they occur. It takes advantage of built-in diagnostics to begin diagnosis and corrective action within minutes—not hours—of a potential problem. CLARAlert enables you to receive early notification of service events at your site. In the event of a hardware or software problem, CLARAlert’s diagnostic tools automatically transmit a machine initiated (MI) notification packet to the EMC Customer Support Center. CLARAlert also enables the Customer Service Center to remotely dial-in to your site to perform diagnostics. There is an automated escalation process for CLARAlert initiated situations to ensure notification of all appropriate individuals at your site, the local and regional field service offices, and EMC corporate headquarters.

**On-site warranty.**

EMC CLARiiON arrays receive around-the-clock coverage including on-site service, parts, and labor.

EMC Corporation  
Hopkinton  
Massachusetts  
01748-9103

1-508-435-1000

In North America  
1-800-424-3622, ext. 501

[www.EMC.com](http://www.EMC.com)

**For more information.**

For more information on the EMC CLARiiON FC5700 system, contact your EMC CLARiiON sales representative or authorized distributor. Or contact EMC directly.

**On-site warranty protects your storage arrays.**

EMC delivers around-the-clock coverage for your EMC CLARiiON systems, including on-site service, parts, and labor, 24-hours-a-day, seven-days-a-week, including holidays. EMC CLARiiON hardware and Licensed Internal Code software carry a standard two-year warranty designed for mission-critical support. A post-warranty maintenance agreement is also available, so you can continue this high level of service, support, and security. Warranty service is delivered directly by the best-in-class EMC Customer Service organization, which is committed to providing coordinated support across multivendor platforms, technologies, and geographical boundaries.

EMC<sup>2</sup>, EMC, CLARiiON, CLARAlert, and Navisphere are registered trademarks and The Enterprise Storage Company, EMC Enterprise Storage Network and E-Infrastructure are trademarks of EMC Corporation. All other brands or products may be trademarks or registered trademarks of their respective holders. The materials contained herein are summary in nature, subject to change, and for general information only. The terms and conditions governing the sale of EMC hardware, the licensing of EMC software and providing customer services consist solely of those set forth in the written contracts between EMC and its customers.

© 2000 EMC Corporation. All rights reserved. 1/00

Produced by EMC Global Communications.

Data Sheet  
C762