

## EMC CLARiiON FC5300 Array

Extending storage capabilities beyond the data center

- 1** Full Fibre Channel architecture delivers performance and scalability to your business applications
- 2** Centralized storage management lowers overall system management costs
- 3** EMC CLARiiON arrays' full high availability and data integrity features reduce unplanned downtime and improve application deployment
- 4** EMC CLARiiON's modular architecture helps you avoid spending money unnecessarily—start small, invest as you grow
- 5** Cost-effective deployment of highly available and scalable storage is ideal for distributed applications
- 6** Around-the-clock coverage for your EMC CLARiiON systems, including on-site service, parts, and labor, 24-hours-a-day, seven-days-a-week, including holidays



### **Extraordinary performance at an incredible value.**

EMC takes the time to discover exactly what your business is about and how we can help you use our products to implement a way of doing business that you never thought possible. We can meet your need for distributed storage systems with our EMC CLARiiON® full Fibre Channel arrays, including the EMC CLARiiON FC5300. The EMC CLARiiON FC5300 delivers a third generation of powerful end-to-end Fibre Channel arrays that

provide high functionality and performance, while offering the highest availability and data integrity—all at very affordable prices. And through the EMC Enterprise Storage Network™, CLARiiON arrays can be part of your overall EMC E-Infostructure™.

If you are running small-to-medium-size applications in OLTP, data mart, e-mail, Web server, print server, engineering, or any other application where performance and uptime are of great importance, the

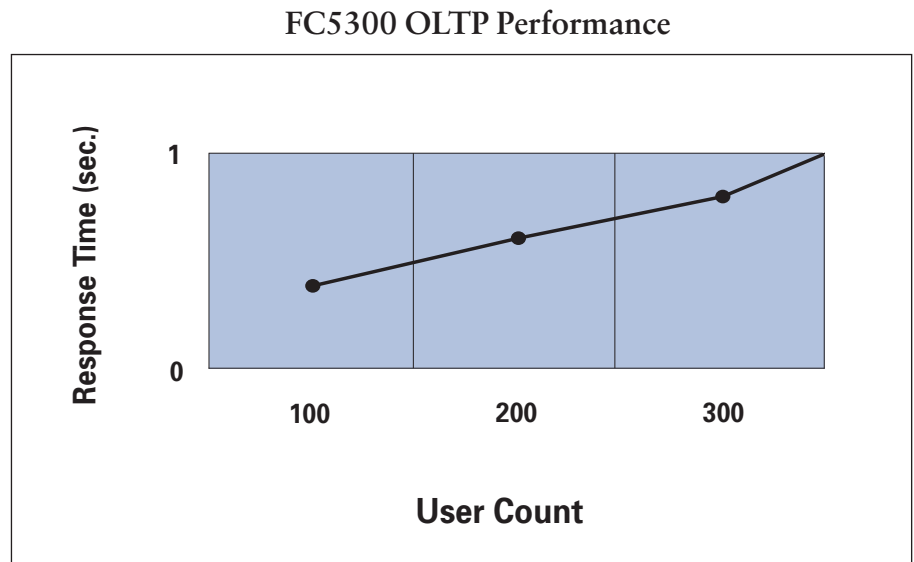
# The EMC CLARiiON FC5300 delivers both high data throughput and high I/O performance.

FC5300 is an excellent choice. Available in a deskside or rackmount chassis, the FC5300 offers an easy storage entry point of just five full-fibre drives that dynamically scales to 30. Full Fibre Channel features, such as fully redundant components and dual active storage processors, provide the highest levels of availability and data integrity, making the FC5300 the most advanced full Fibre Channel disk array in its class.

Because of its exceptional data integrity, data throughput, storage expandability, and connectivity features, EMC CLARiiON Fibre Channel is the proven technology for meeting today's business requirements. Industry analysts point to Fibre Channel as the optimal storage technology—now and in the future. The FC5300 architecture fully exploits Fibre Channel technology, delivering both high data throughput and high I/O performance. The FC5300 boasts performance of 121MB per second and 8,400 I/Os per second, which means you can service more of your users with consistent response times.

## High availability and data integrity beyond other RAID products.

Software reliability and robust hardware are the keys to EMC CLARiiON high-availability storage systems. The FC5300 array's redundant design provides an unparalleled storage system architecture for data integrity.



And, EMC CLARiiON's patented design provides two additional levels of data integrity beyond other RAID products: end-to-end checking of the data inside the disk array and parity coherence. End-to-end checksum provides a mechanism against data corruption, even after unexpected events occur. Data parity coherence protects against the possible inaccuracies that can be created during power outages and disk failures. EMC CLARiiON industry-proven RAID storage systems deliver data reliability under even the most adverse conditions.

## RAID flexibility for easy configuration.

The FC5300 provides RAID levels 0, 1, 1/0, 3, and 5. This allows arrays to be

easily configured into storage pools for high performing distributed applications, balancing performance and cost. RAID protection is through the array, relieving the host from this task and saving precious host CPU cycles that can be used for other business needs.

In order to allow you to take advantage of the increased capacity of drives for maximum disk utilization, EMC CLARiiON supports RAID groups and the ability to create LUNs (logical unit numbers) within the RAID group. Dynamic Expansion allows physical drives to be added to an existing RAID group while the system is operating. This provides greater flexibility in allocating and re-deploying storage to different users.

## HIGHLIGHTS

### High performance.

The FC5300 boasts performance of 121MB per second and 8,400 I/Os per second, resulting in faster response times and improved application performance.

### Configuration flexibility.

The deskside configuration is ideal for distributed and departmentalized office environments; you can start with as few as five drives and grow dynamically to 30 drives.

### Full Fibre Channel RAID storage.

Fibre Channel is the proven technology for meeting business requirements today and tomorrow. This technology is yours with the EMC CLARiiON FC5300.

**Enhanced connectivity saves time and money.**

Full Fibre Channel technology greatly simplifies cabling issues. Built-in Fibre Channel hubs allow connectivity to dual-server clusters without using external hubs, thereby reducing implementation costs. The arrays can be connected to a Fibre Channel switch, an external hub, or an MIA (Media Interface Adapter) for optical connections.

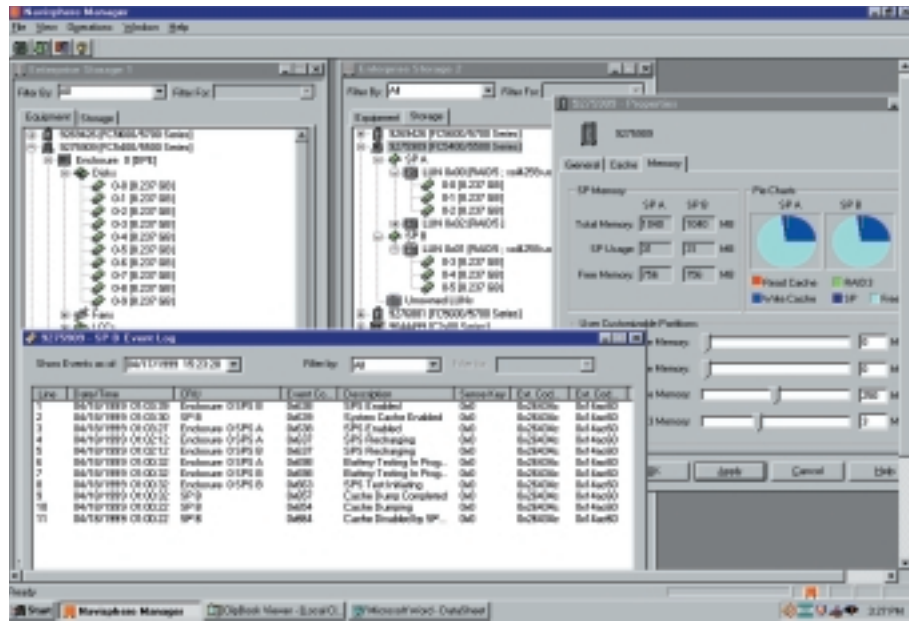
**High performance, capacity, and flexibility.**

FC5300 disk arrays support up to 1.1 terabytes of storage, utilizing modular, easy-to-configure building-block arrays. Today's sophisticated applications demand storage performance tailored to each application. EMC CLARiiON arrays can be dynamically reconfigured to best tailor the storage to the application. This approach allows you to meet your storage needs today and in the future.

The EMC CLARiiON FC5300 provides greater flexibility for heterogeneous system environments by supporting UNIX (Sun Solaris, HP HP-UX, IBM AIX), Microsoft Windows NT, and Novell NetWare platforms.

**High-availability features.**

Redundant component architecture, high data integrity and availability, and Application Transparent Failover increase application availability thereby enhancing business operations.



**EMC Navisphere storage management software.**

Navisphere® storage management software extends the capabilities of EMC CLARiiON arrays by offering comprehensive, business-wide storage management. This suite of tools lets you easily and effectively configure, monitor, and tune EMC CLARiiON disk arrays. Navisphere simplifies the management of all EMC CLARiiON storage devices, increasing the productivity of the system administration staff, while reducing storage management costs.

Protection of information and control of data assets are important components for storage management. Navisphere provides a balanced set of capabilities that

meets the ease-of-management and security requirements of most applications. Navisphere enterprise applications, such as Manager/Supervisor, ATF (Application Transparent Failover), Analyzer, Integrator, Event Monitor, and CLI, allow administrators to monitor, manage, and optimize storage devices installed in a network. Navisphere is available for all EMC CLARiiON arrays.

**Remote diagnostics protect your operations.**

CLARAlert® remote support, standard with your EMC CLARiiON FC5300 arrays, is a key tool used to proactively eliminate problems that can affect you and your applications. CLARAlert is a proactive service for anticipating potential hardware

**Navisphere storage management and analysis tools.**

Centralized storage management tools reduce the total cost of ownership by lowering storage management costs. Analysis tools enable administrators to enhance array performance.

**On-site warranty.**

EMC CLARiiON arrays receive around-the-clock coverage including on-site service, parts, and labor.

EMC Corporation  
Hopkinton  
Massachusetts  
01748-9103

1-508-435-1000

In North America  
1-800-424-3622, ext. 501

[www.EMC.com](http://www.EMC.com)

**For more information.**

For more information on the EMC CLARiiON FC5300 system, contact your EMC CLARiiON sales representative or authorized distributor. Or contact EMC directly.

or microcode problems before they occur. It takes advantage of built-in diagnostics to begin diagnosis and corrective action within minutes—not hours—of a potential problem. CLARAlert enables you to receive early notification of service events at your site. In the event of a hardware or software problem, diagnostic tools automatically transmit a machine initiated (MI) notification packet to the EMC Customer Support Center. CLARAlert also enables the Customer Support Center to remotely dial-in to your site to perform diagnostics. There is an automated escalation process for CLARAlert initiated situations to ensure notification of all appropriate individuals at the customer site, the local and regional field service offices, and EMC corporate headquarters.

**On-site warranty protects your storage arrays.**

EMC delivers around-the-clock coverage for your EMC CLARiiON systems, including on-site service, parts, and labor, 24-hours-a-day, seven-days-a-week, including holidays. EMC CLARiiON hardware and Licensed Internal Code software carry a standard two-year warranty designed for mission-critical support. A post-warranty maintenance agreement is also available, so you can continue this high level of service, support, and security. Warranty service is delivered directly by the best-in-class EMC Customer Service organization, which is committed to providing coordinated support across multivendor platforms, technologies, and geographical boundaries.

EMC<sup>2</sup>, EMC, CLARiiON, CLARAlert, and Navisphere are registered trademarks and EMC Enterprise Storage Network, E-Infostructure, and The Enterprise Storage Company are trademarks of EMC Corporation. All other brands or products may be trademarks or registered trademarks of their respective holders. The materials contained herein are summary in nature, subject to change, and for general information only. The terms and conditions governing the sale of EMC hardware, the licensing of EMC software and providing customer services consist solely of those set forth in the written contracts between EMC and its customers.

© 2000 EMC Corporation. All rights reserved. 1/00

Produced by EMC Global Communications

C761